



TOP STORY

Fifteen Years of Preserving Nature: An Overview of CMLC's Conservation Success

BY HARRISON METZGER CMLC VOLUNTEER

INSIDE

5 HIKING NC'S BLUE RIDGE

6 ANNUAL EDUCATION SEMINAR

7 CMLC'S NEW FACILITIES

9 FINANCIAL SUMMARY

A deep granite chasm shelters rare plants and animals amid mist-swept cliffs, wispy waterfalls and cool dark caves, now and forever.

A remnant mountain bog that's home to some of the area's rarest flora is restored and protected, providing a glimpse of what was here before the farms, roads and towns.

To the north, south, east and west of the broad valley, the ancient Blue Ridge reaches skyward, sheltering dense forests, pure water and myriad habitats as it has for millennia.

Now and forever, our region's environmental quality, the basis for its prosperity, is being preserved thanks to the tireless efforts of you: the volunteers and supporters of the Carolina Mountain Land Conservancy.

In its first 15 years, the organization has protected more than 18,500 acres in 80 conservation projects completed so far across the Blue Ridge.

30,000 acres now

DuPont/Upper Green River Area

There are big, high profile public lands, like CMLC's work to create the original



Green River Preserve

7,600 acres of DuPont State Forest, and the smaller tracts linking it to protected wild lands.

Assembling pieces in the green puzzle, CMLC has worked with landowners such as the Schenck and Ball families to permanently protect 3,895 acres of Green River headwaters south of DuPont.

Combined with 750 acres the Ball family preserved in the 1990s, these conservation easements connect DuPont's 10,400 acres to more than 10,000 protected acres in Upstate South Carolina.

These connections provide the kind of habitat vital to the survival of species large and small. And it's not just bog turtles, black bears and bunched

arrowhead plants that benefit.

Nature preserves help ensure continued supplies of clean mountain water upon which our communities and industries depend. They preserve the mountain landscapes that fuel recreation-based industries, including travel and tourism and summer camps.

"The highest value of the land is in its undeveloped state, so that it may inspire many after us," says Sandy Schenck, whose Green River Preserve camp teaches youngsters to appreciate the natural world.

In addition to creating conservation easements on these large private parcels, CMLC in 2006 helped to expand DuPont, North Carolina's most popular state forest.

With funding from the NC Clean Water Management Trust Fund, CMLC purchased 118 acres on the northeast edge of DuPont. Property owners James and Rose Buckner sold the land for less than half its value because they wanted to see it added to the state forest. The property links the main forest tract with a previously separated parcel, protecting pristine Dismal Creek and its tributaries. It's another piece in the puzzle of protected green spaces CMLC has preserved along the Southern Blue Ridge.

CONTINUED PAGE 3

PLUS

LETTER FROM DIRECTOR 2
LETTER FROM BOARD 7
AMERICORPS THANKS 6

MEMBERS & DONORS 8
TRUSTEES & STAFF 11



From the Executive Director

15 Years of Saving Outstanding Places

Those of you who have stopped by CMLC's often hectic office or had the fortune to interact with our energetic staff, board members or volunteers know that the work of saving local land keeps us all moving at a brisk pace. In our 15th year, it is nice to have the opportunity, however briefly, to step back and reflect upon the beneficial impact that CMLC has had on the southern Appalachian communities we serve. Thanks to the longtime support of our members, volunteers and contributors, we have much to celebrate!

CMLC was formed on Earth Day in 1994 by a small group of committed volunteers that met the challenge to conduct a comprehensive natural heritage inventory of

Henderson County in the early 1990's. Many of our most important conservation projects took place in our early years and were achieved entirely by volunteers. Among the conservation successes was the acquisition of a partial interest in the 600-acre Florence Nature Preserve in Gerton, and the donation of conservation easements from John Humphrey (Mills River) and Bub Hyder (Edneyville)-- landowners who have continued their strong support of conservation in subsequent years.

I was hired in 1999 as CMLC's first full-time staff person and I'm proud of how we have built a strong foundation to achieve an ever-expanding series of conservation projects that will forever benefit residents and visitors to our region. From lands in the Hickory Nut Gorge and Chimney Rock State Park, to the Upper Green River watershed and DuPont State Forest, to the Upper French Broad River watershed and Pisgah National Forest, CMLC has helped to permanently protect over 18,500 acres of our region's most outstanding natural treasures.

In thinking back over the work that CMLC has accomplished to date, I am struck by the many, many people whose involvement has made our success possible. The list of key individuals is certainly too long to name here, however I'd like to mention the passing of two people in the last year who illustrate the kind of community support that has been critical to CMLC. Last April saw the passing of Dr. Kathleen R. "Kay" McGrady, who had been a buoyant presence at many CMLC gatherings. She was a woman whose generosity and support meant so much to CMLC and other area organizations, who's whimsical good-nature, whether stuffing envelopes in our back office or zipping around in her wheelchair dressed as a clown at a children's charity event, immediately punctured any air of solemnity. She will be deeply missed.

More recently, we were saddened by the passing in February of George "Howard" McElrath. Mr. McElrath was born in 1913 on land along Seniard Creek in the Upper Mills River watershed that he and his family placed under conservation in late 2008. Although facing a variety of health issues, he was able to join us in December for a celebration with friends, family and conservation partners on the very property he had made his goal to conserve. The 436 acres surrounded almost entirely by the Pisgah National Forest are now permanently protected due to Mr. McElrath's love of the land. I am glad he got to see that goal achieved before he passed away and grateful for the legacy he has left to present and future generations.

I invite you, our members and supporters, to help CMLC build upon the foundation laid down by Dr. McGrady, Mr. McElrath, and all the other volunteers, donors, conservation landowners and individuals who have made CMLC's first 15 years so successful. Join us at our 15th Annual Membership Meeting on Sunday April 26th, and let us know how you'd like to get more fully involved. Thank you so much for your continued support and all you do to make CMLC's conservation work possible! 🌿

Kieran Roe
Executive Director



Our Mission

Carolina Mountain Land Conservancy helps landowners protect local land and water resources vital to our natural heritage and quality of life. As a local nonprofit organization dedicated to *saving the places you love*, CMLC has created a regional network of more than 18,500 acres of protected farm, forest, park and natural lands.

CONTINUED FROM PAGE 1

Hickory Nut Gorge & World's Edge

In 2005, CMLC's staff worked with other conservation partners to save 1,568 acres at World's Edge. The groups' quick action protected the highlands where Henderson, Rutherford and Polk counties join to become part what later became Chimney Rock State Park.

A place of magnificent views that is home to three federally listed rare or endangered species, World's Edge was

plans to protect 5,000 to 6,000 acres in Hickory Nut Gorge. Reggie Hall, former director of land protection for CMLC who worked to close the deal, summed up the importance of saving World's Edge: "This is place of national conservation significance."

CMLC was working to permanently protect key biological hot spots in Hickory Nut Gorge, years before World's Edge and Chimney Rock were saved.

In 2001, Tom and Glenna Florence donated the 600-acre Florence Nature Preserve to CMLC. Located on the slopes of Little Pisgah Mountain near Gerton, the preserve contains unusual plant communities, forests of older trees, rock outcrops and waterfalls and remnants of the historic Buncombe Turnpike.

Dr. Florence and his wife worked for five years with CMLC to permanently protect the land. Dr. Florence, a retired Atlanta physician, echoed the words of

Sandy Schenck at Green River Preserve in speaking of his reasons for making the donation.

"I wanted it preserved like it is," he told the Times-News of Hendersonville eight years ago. "I did not wish for any development to occur on it, because its natural state is its best state."

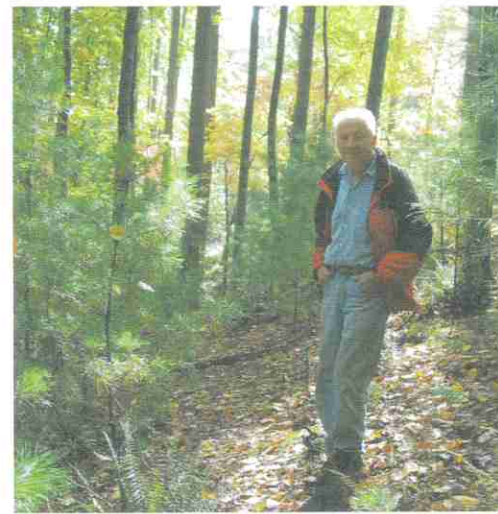
Upper French Broad Watershed

Among the many generous contributors to CMLC, the common refrain is a love of nature and a desire to preserve the bounty passed down to us for all future generations. The tax and financial benefits that come from conservation donations always seem secondary to this deep and abiding conservation ethic.

A dozen years ago, John Humphrey, an early board member and former president of CMLC, donated the organization's first conservation easement on his 182 acres in Mills River. Humphrey and his late wife Ruth had owned the land for almost three decades and wanted to preserve it for their five children as well as the deer, songbirds, frogs and owls.

"All of these lands drain into the creek (which feeds Mills River, a vital water source for Hendersonville and Asheville)," he told the Times-News at the time. "The whole area has a great role to play in protecting water quality."

The same is true of the 436 acres that Mills River native Howard McElrath conserved along Seniard Creek last year.



John Humphrey, CMLC trustee and the first to record a conservation easement with CMLC the mid-1990s.

Protection of that property, which had been in McElrath's family for almost a century, is key to protecting the pristine waters of Mills River.

Properly managed farms and mountain bogs also play a huge role in protecting water quality. In recent years, CMLC has helped preserve both.

In 2003, Patten Seed Co. placed a 360-acre easement on its Horse Shoe Bend Farm nestled in a curve of the French Broad. The easement protected important riparian habitat from being developed and allows the company to continue to grow its Super Sod there. More than 25 acres of stream buffer protects the stream banks and a bluff, helping protect water quality for the French Broad, a regional water source.

Just last fall, CMLC signed an option to purchase 27 acres of the Ochlawaha Bog, a rare mountain bog near Flat Rock that is home to Bunched Arrowhead, a federally listed endangered species. Populations of the wildflower are known to exist at only two sites in Henderson County a few more in Greenville County, S.C.

CMLC is restoring the bog in cooperation with the U.S. Fish and Wildlife Service, the N.C. Plant Conservation program and other partners. Protecting the bog preserves rare species such as the Bog Turtle in a remnant habitat critical for biodiversity and water quality.

These are only a few of the projects CMLC has completed in its first 15 years. Much work remains to be done. But our organization is well on its way to piecing together a green puzzle of protected lands across the Blue Ridge mountains we all treasure. 🌿

World's Edge

targeted for development. CMLC had been working for months to acquire the land when a developer put in a bid to buy it in June 2005.

CMLC's board of trustees acted fast, pledging to raise \$6 million, some backing the deal with their personal finances. The Nature Conservancy's N.C. Chapter pledged \$10 million. The owners accepted the conservationists' offer of \$16.1 million in early June and the deal was closed two months later.

The conservancy has since worked with partners to protect 3,733 at Chimney Rock State Park. World's Edge, topping out at 3,800 feet above sea level, includes cliffs, forests, breathtaking views and 20,000 feet of streams and waterfalls. Accessible from Henderson County, this mountain treasure adjoins the 1,000-acre Chimney Rock tract that forms the heart of the park in the Rutherford County.

Another piece of the green puzzle was saved, protecting diverse habitats for the plants and animals in the uppermost reaches of Hickory Nut Gorge. Combined with tracts at Chimney Rock, Rumbling Bald and other parcels, the new park attracts hikers, rock climbers, families and other outdoors lovers, boosting tourism and the economy.

"Acquiring this magnificent property is a triumph for our region's people and our natural heritage," said Kieran Roe, executive director of CMLC.

The state is moving forward with



Hiking North Carolina's Blue Ridge Heritage

CMLC's Annual meeting featuring Danny Bernstein

2pm Sunday, April 26th at Camp Tekoa

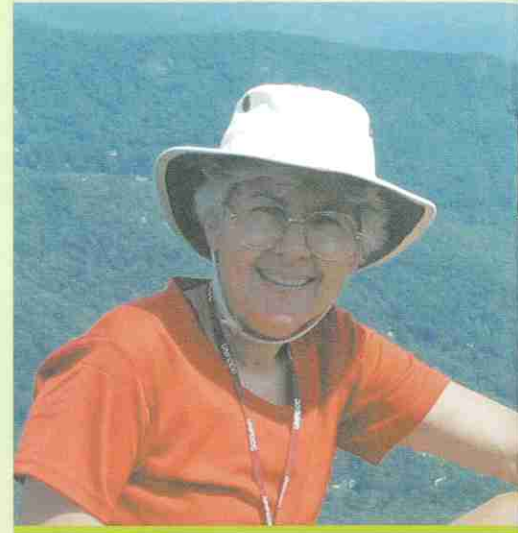
CMLC invites members and the community to our annual meeting at beautiful Camp Tekoa, near Hendersonville.


An avid hiker, Danny Bernstein has hiked the entire Appalachian Trail, and completed the *South beyond 6,000*, all the 6,000 foot mountains in the southern Appalachians. She most recently finished all the trails in the Great Smoky Mountains National Park (over 800 miles). In addition to being a member of CMLC, Danny is an active member of the Carolina Mountain Club (CMC), and a lifetime member of the Appalachian Trail Conservancy. When not hiking, she writes about the outdoors. Hiking the Carolina Mountains was published April 2007. Her new guidebook, *Hiking North Carolina's Blue Ridge Heritage*, discusses the unique history

of specific trails and hiking areas. Come along with her as she shares her passion for the great outdoors, and relates the history and heritage of the areas she has hiked. Visit her website, www.hikertohiker.com, to learn more about hiking, and her books.

The annual meeting will be an opportunity for CMLC to celebrate our achievements from 2008, and look forward to our next year of projects. We will present the 2009 Lela McBride Land Stewardship Award, which is given to an individual or group who has made significant contributions to land conservation or stewardship in the region. After the meeting, guests will have an opportunity to walk on the wooded grounds of the camp.

The meeting is free and open to the



public, however seats are limited! For directions visit www.carolinamountain.org. To register email outreach@carolinamountain.org, or call 697-5777 and ask for Aimee Baxendell. 

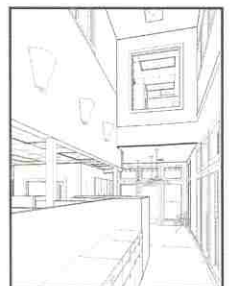
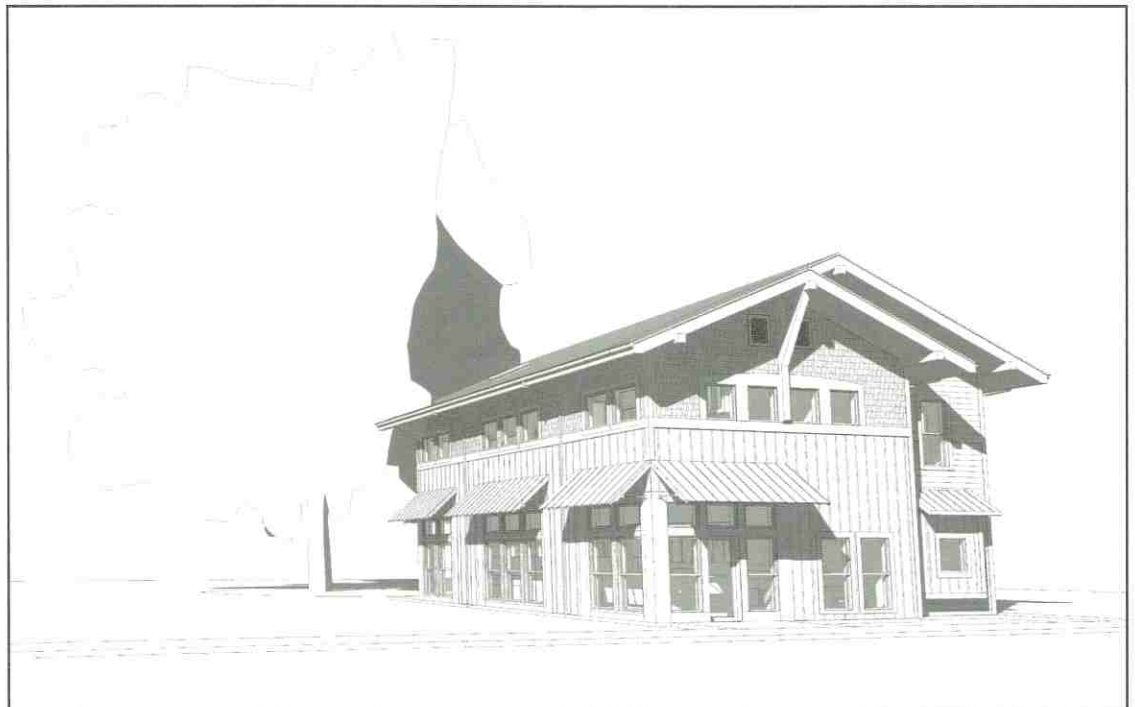


CMLC
CAROLINA MOUNTAIN
LAND CONSERVANCY

CMLC HAS GONE ELECTRONIC

Help us reduce paper
and save money by
receiving membership
announcements
and publications at
carolinamountain.org.

Please update your email
address with us!



The 7th Annual Continuing Education Seminar

CMLC is excited to host a new featured speaker Timothy Lindstrom!

Financial Strategies for Landowners:

Advanced Seminar on Conservation Easements & Tax and Estate Planning.

May 12, 2009

1:00 PM - 5:00 PM

NC Arboretum, Asheville

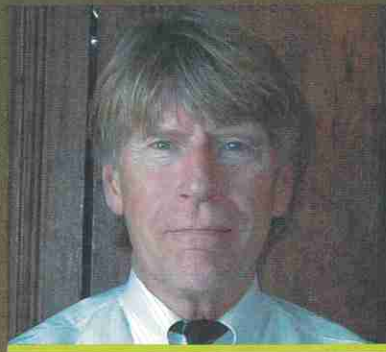
Registration opens April 1st

Register before April 22nd for our special Earlybird rate!

\$110 / \$125 General Admission Registration

\$185 / \$200 Continuing Education Registration

For: Landowners, attorneys, accountants, estate and financial planners, appraisers, realtors, foresters, and other landowner advisors. Continuing education credits are available.



Timothy Lindstrom

is an attorney who specializes in the federal tax law governing conservation easements and land trusts. He serves as legal counsel to easement donors and

land trusts throughout the United States. Author of *A Tax Guide to Conservation Easements*, he is a frequent lecturer and writer on the topic, and has played an instrumental role in the creation of additional statutory incentives for voluntary land conservation.


The seminar will provide insight into land protection strategies for landowners and professional landowner advisors. Participants will learn the steps involved in placing a conservation easement on private land, and how professionals can best advise landowners through this intricate process. Income, estate, and property tax benefits available to easement donors will be covered, along with related estate planning conservation tools.

See our website for more information! www.carolinamountain.org

CMLC's Permanent Home

847 Case Street, Hendersonville 28793

In October 2008 CMLC trustees broke ground on a new 3,200 square foot custom built passive solar and energy efficient office building. Scheduled to be completed in May 2009, our new 3,200 square foot, passive solar and energy efficient home is located at 847 Case St. Hendersonville, NC 28793 in the non-profit campus Ironwood Square, which is just off of Upward Road in southeast Hendersonville. This significant investment allows CMLC to bring to a close over a decade of paying facility rent.

The new building is a tribute to the many members, donors, and volunteers upon whom CMLC's success firmly rests. The new building presents several meaningful fundraising opportunities for CMLC's membership. Plans are in place for an all native landscape around the building and etched pavers will comprise a donor's pathway. The pavers allow CMLC supporters to memorialize a loved one or to honor a special friend or family member. The pavers start with a fully tax-deductible \$500 gift and the naming of garden areas is a requested gift of \$250. To name a room within the building, please contact Kristin Harkey, CMLC Development Director, development@carolinamountain.org. These major donor gifts greatly enhances CMLC's ability to conserve more land. 


Calling All Green Thumbs!

CMLC welcomes and encourages volunteers to help with the installation of our landscaping plants. We are also in the early planning phases for a rain garden situated towards the back of the property. Please contact our Volunteer AmeriCorp member for more information: volunteer@carolinamountain.org.



CMLC THANKS THE 2008-2009 AMERICORPS MEMBERS!

In early September 2008, CMLC welcomed twenty-one AmeriCorps members who began their eleven month service learning program Project Conserve, which is funded by the Corporation for National Service.

The members support activities in trail maintenance, land protection and stewardship, membership programming and outreach. Many thanks to the host organizations that have made it possible for AmeriCorps Project Conserve to add tremendous capacity to our conservation efforts locally. 



ABOVE The 2008 AmeriCorps Members with Project Conserve clear scrap metal on a CMLC protected parcel

From the Board of Trustees

Dear Supporters of Carolina Mountain Land Conservancy,

It is my pleasure on behalf of the board of trustees to present to you CMLC's annual report for calendar year 2008—a year in which your land conservancy emerged as a nationally recognized 'best practices' land trust with over 18,500 acres under permanent conservation.



In 2008 CMLC embraced unprecedented professional accomplishment, having been among the first thirty-nine land trusts in the country and the first in North Carolina to be awarded National Accreditation from the Land Trust Alliance's National Accreditation Commission. In 2008 CMLC also began work on strategic capital undertakings, namely the 3,200 square foot, passive solar and energy efficient new office building in Hendersonville's Ironwood Square. In 2008 CMLC added over 1,000 acres in newly conserved land and effectively protected essential drinking water sources on boarder land parcels to Pisgah National Forest in Mills River.

It is for the love of these mountains, the magnificent natural beauty, the fresh water, our wildlife habitat, area history and culture and green spaces that you supported CMLC with either your time or your treasure. All of CMLC's success firmly rests on the members, donors, volunteers and supporters listed among the following pages. During a time when giving has become more difficult, you gave last year and with your continued support this year, CMLC will take on new conservation challenges that secure the quality of life we all enjoy.

In 2009 Carolina Mountain Land Conservancy celebrates its 15th anniversary. During this time of economic difficulty and transition, I hope you agree that established environmental organizations such as CMLC can be positioned—with your continued help— as major players in determining the kind of future we want for our children and their children. Our 15

years of local experience in land stewardship has taught us that conservation is a solid investment, now as in the past, with benefits and rewards *in perpetuity*.

Now is the time for CMLC staff, trustees, landowners, volunteers, members and community partners to act. Donations given now have the potential to protect more of our spectacular ridgelines, rivers, rural landscapes, precious mountain bogs and wildlife habitat than in previous times. The slowing of development and the non-escalation of land prices is only temporary, however. We must get involved and consider how protecting the land we love contributes to our daily enjoyment of where we live.

By supporting our work you make a lasting investment in habitat, watershed, and viewshed protection. Land trusts have developed "win-win" methods of saving and protecting land from development, and guaranteeing that these protections will last forever. I urge you to make an enduring contribution toward the future of our mountain home. The dollars donated now will protect this beautiful land for ourselves and those who follow. Thank you for your continued and future support. Together we can save the places you love!

Sincerely,

Dr. Robert J. Wald
President, Carolina Mountain Land Conservancy Board of Trustees
Mayor Pro Tem, Chimney Rock Village

FINANCIAL SUMMARY

2008 FISCAL YEAR FIGURES*

Net Assets 2003–2007

2003	\$ 1,674,798
2004	\$ 1,778,070
2005	\$ 3,452,708
2006	\$ 3,760,021
2007	\$ 4,031,324
2008	\$ 3,976,189

REVENUE

Grants (Land Protection & Operations)	\$ 528,363
Restricted Donations from Individuals	\$ 334,431
Dues & Donations from Individuals	\$ 188,853
Interest/Investment Income	\$ (88,023)
Fees & Other Income	\$ 21,608
Total Gross Income	\$ 985,232

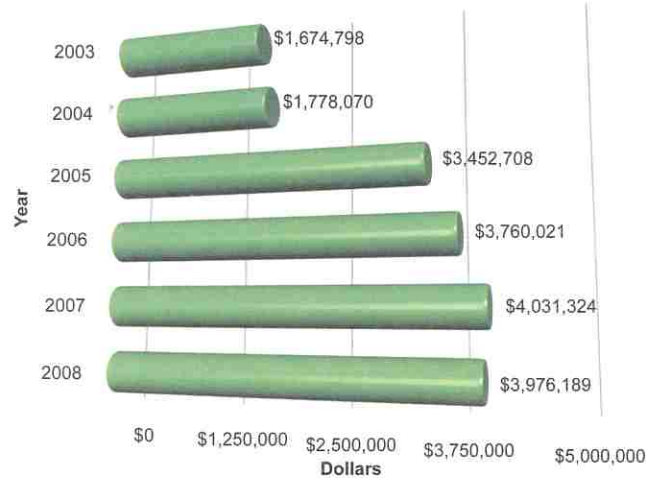
EXPENSES

Land Protection	\$ 497,962
General Operations	\$ 185,715
Americorp	\$ 127,989
Stewardship	\$ 38,568
Education	\$ 70,512
Fundraising and Membership	\$ 119,541
Total	\$ 1,040,367

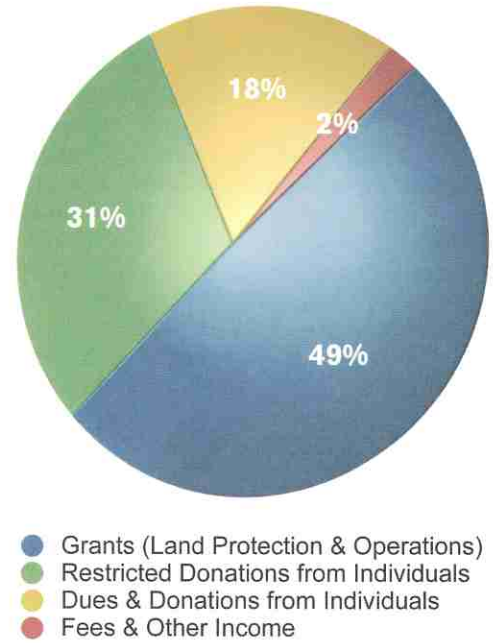
CHANGE IN NET ASSETS	\$ (55,135)
NET ASSETS AT BEGINNING OF YEAR	\$ 4,031,324
NET ASSETS AT END OF YEAR	\$ 3,976,189

*These figures are based on pre-audited financial statements and do not include the value of conservation easements held by CMLC.

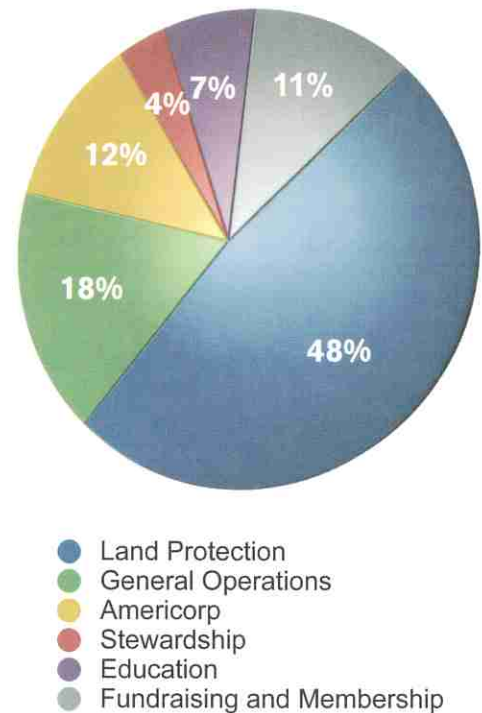
NET ASSETS 2003–2008



2008 REVENUE



2008 EXPENSES



2008 Members & Donors

Special Thanks to CMLC's Generous Donors

*Asterisks have been placed next to donors that also have a conservation easement with us and are lifetime members

\$10-100 Level

Steve Acker
Melissa Acker
Frances Ackley
David & Susan Amsler
Richard & Jennifer Armstrong
Tracy Ash
Mark Ashley
Ann Babcock
Mrs. Amy Bacquet
Herm & Ruth Bailey
David & Celeste Baldwin
Mr. & Mrs. Harold and Janet Beam
Lloyd Andrew & Janie Bell
Don & Toni Bellm
Janet Benway
Frank & Joy Blazey
Annette Blum & Jim May
George & Susan Bonham
John & Laralynn Bonham
David Boone
Anne Booth
Ken & Chris Borgfeldt
Bernie & Diane Boyer
Ralph Brautigam
Rusty Breeding
Alison Brennan
Dan & Peg Bresnahan
Roger Briggs & Virginia Faust
Robert & Marjorie Brockway
Jeff & Dawn Brookshire
Margie Brune
Susan Bryson
Betsy & Allen Burdett
Dale Burgett
Stephen & Beverly Burns
Lucy Butler
Bobett Button
Tom Byers
Charles & Barbara Byrd
Abby Cain
Kevin & Gina Caldwell
Heyward & Eleanor Carter
Deb Caughron & Michael Follo
Sharon Chambers
Joy Charlebois
Ayres Christ
Daniel & Margaret Cogswell
Joan Colburn & Blair Justice
Edith & James Collins
Joanne Covell
Lynn Cox
Lucy Crawford
Tracy & Larry Czajkoski
Deborah Daniel
Robert & Susan Danos
Janna Davis

Norah Davis
Betty Dickinson
Mr. & Mrs. John and Carol Dodson
Mike Domonkos & Karla Atkinson
Ms. Gerry Donovan
Fowler Dugger
Tom & Nancy Eubank
Jerry & Joy Eyer
Charlotte Fain
Edmund & Carver Farrar
Mr. & Mrs. Edwin Feiler
Bill & Marianne Flanders
Dr. & Mrs. William Fogle
James & Sheryl Fortune
Rodney Foushee
Laura Foxx-Weddle
Ms. Helen Freedman
Richard Freudenberger
Jerry Friedman
Robert Gaegler
Miriam Goder
Homero & Sylvia Gonzalez
Laurie & Bruce Goodman
Alan Graham
Brenda Greco
Mary Ann Hailey
Kenneth Hamblin
Robin & Gene Hamme
Harvey & Sarah Harris
John & Trisha Harrison
Ruth Hartzler
Edward Hathaway
Dr. & Mrs. David and Rita Heatherly
Mary & Sam Highberger
George & Barbara Hochschild
Mr. Don Hoffman
Tonya Hogan
Linda Holt
Ann Houghton
Kathleen Hudson
Fred & Martha Huggins
John Huie
Bill & Jana Humleker
Steve Humphrey
David Humphrey
Dries & Nancy Jansma
Jon Johnson
Julia Jones
David Kaufman-Moore
Maureen Keller
Ben & Adria Kempner
Jess & Phyllis Key
Mike & Penny Keys
Constance Knight & Richard Johnson
Mr. & Mrs. Leo Kosiba
Mitchell & Dorothy Kostro
Mr. & Mrs. Ashok Kudva
LaNora & George Lahtinen
Juanita & Larason Lambert

William Larson & Ann Wilson
Marion Latham
Dana Leavitt
Alfred Leonard
Richard & Betty Leppingwell
Andrea Leslie
Eugene & Thelma Letourneau
James & Bettie Liebzeit
Rodney & Terrie Linford
Joan Lowton
Elizabeth MacCallum
Trish MacIsaac
Erika Macklin
Kate MacNeil & Wail Malaty
Keith & Bonnie Maddox
Thomas & Theresa Mahoney
Pat Malinak
Frank Martella
Bill & Linda Mashburn
Maria Mason
Richard & Susan Maybin
Ernie & Joan Mazzatenta
* Rick & Joanne Merrill
Marshall & Amye McCallie
Izora McClure
Edwin Mccoy
Alan McCrory
William & June Meanix
Ro & Bob Metcalf
Milan Miculinic
Angie & Don Miller
Nancy Mitchell
William & Suzanne Moore
Fred & Jan Morris
Margaret Moss
Dan & Sandi Mraz
Woodley & Susan Murphy
Loretta Neddo
Carl Newman
Jim Norris
Laurie Nussdorfer
Nancy Obre
Tom Orr
Mrs. Marian Orrok
Robert Overstreet
Monica Owen
Chet & Margaret Parent
Gerald Parker
David & Patricia Parker
Ron & Jan Partin
Stanley & Mary Patrie
Dr. & Mrs. Arthur Pearsall
Mr. & Mrs. Robert Pearson
Kerri & Mike Pelz
Dan and Gloria Pincu
Dan Pittillo
Hoyt Ponder
Kim Pounds
Winthrop & Margaret Reed
Tracey & Crystal Reese
Helen Reilly
Leo & Betty Reuther

Dianna Rhodes
Lea Richter
Ms. Loretta Robinson
Dorothy Rogers
Charley & Kim Rogers
Chuck & Priscilla Rouse
Anna Salzberg
Bill Sare
David Schenck
Patrick & Carol Schlueter
Alan & Carolyn Schmalz
Dorothy Semans
Sondra Setser
Larry Seymour
Bob & Lorrie Shelly
Mr. & Mrs. Kalman Sherman
Paul Sisco
Judie Sloan
James & Suzanne Soos
Kim & James Spencer
D. Spude
Laura & Ned Stallard
Anthony Statler
Lewis & Mildred Steinbach
William Stevenson
Thomas Stone
Art Stuenkel
*Mr. & Mrs. Phillip and Virginia Swanberg
Jan Tenderholt
Doris Thibodeau
John Thomas
Margaret Thomas
Denny Thompson
Jaxie Thornton
Bob & Becky Thrower
John Thyen
Regina Titus
Debra Torrence
Tom & Pat Tousignant
Paul Van Wormer
Richard & Helga Vogel
Nikki Von
Lauren Wald
Rhonda & Harold Waldrop
Cathy & Jim Walgenbach
Don & Jeanne Walker
Huldah Warren
Charles & Linda Waters
Lyn Weaver
Jana Weed
Ken Weitzen & Sandy McGlashan
George & Martha Wells
Ron & Roxana White
Robert Wilks
Charlie & Lydia Williams
Cynthia & Greg Wilson
Debbie Woodruff
Sam Woodruff
Johanna Woods
Nancy & Jim Wooldridge
Rev. John Wright

Karen Wylie
Ken Youngblood
Camille & Donald Ziegler
Wendy & Sarah Zucca

\$100-250 Level

Susan Alexander
Dwight Allen
Jane Anker
Micah Ansley
Rick & Joanne Astor
Connie & Gib Backlund
Bill & Harriet Ball
Tony Baron
Bruce Bente
E. Peter & Lizzi Benzing
Deborah & Rick Bernstein
Lenny & Danny Bernstein
Mary Bracknell
David & Susan Brady
Tom & Betty Brewster
Richard Broadwell
Jane Brophay
Bill & Jean Bullivant
Dee & Don Campbell
Buzzy Cannady & Kathy Hayle
Robert & Jeannette Cannon
Genien Carlson
Dr. Don & Connie Connell
Blaine & Veryl Lynn Cox
Betsy Craig
Maggie Crow
* Thom & Nancy Duncan
Thomas Dumas
Fred & Iris Durand
James & Keith Earnhardt
Gene & Barbara Earnhardt
Carla Emch
Jane Fanslow
Glenn Franklin
Matthew Fusco
Mary Jaeger Gale & Steve Gale
Patrick & Keri Garrison
Dr. Bill & Mary Garrison
John & Julie Goins
Bret Gorman
Pat & Angelo Grillo
Jeanne & Bert Gue
Bryan Haltermann
Mrs. Mary Hamilton
Mary Bracknell & Paul Harkey
Eaddy Williams Hayes
Dr. & Mrs. Carmelo and Lynda Hernandez
Margaret Herrmann
Lawrence Hogan
William Hollan
Marion & Robert Huffman
Pam Humphrey
Mary Jones
Don & Betsy Jordan
Charles Jordan & Cynthia Vondrasek
Pam & Bob Keith
Lee & Sarah King
Gwen Kuhns
Renee & Stan Kumor
Mrs. Norma Kushigian
Daniel & Edith Lang
Chad Ledbetter

Jim & Martha LeGere
Nancy Leinbach
Sue Maynard
Marcia & George McDermott
Emery & Lee Anne McDonough
Frank & Mary McGlashan
Eleanora Meloun
Robert & Dona Mennella
Ray & Marie Miller
Gary Miller
Mrs. Rosemary Miller
Dr. & Mrs. Bob and Karen Mitchell
Suzanne & Bernard Mwenzi
Garrett Mynatt
Hans & Margo Nagel
Howard & Jackie Norton
* Brent & Karen O'Conner
Susan & Manuel Ovies
Mary Jo Padgett
Dana & Darrell Paul
Al & Cynthia Platt
Chappie Powell & Shannon Womble
Lucy Prim
Dr. & Mrs. James and Sara Purcell
Lynn & Mike Redmond
David & Susan Reece
David & Lou Reeves
Kathy & John Reiff
Jim Bryson Jeanne Reno
John Rich
Jim & Abby Robertson
Jacquelyn & Bruce Rogow
Ed Schwartzman
Phil & Julia Sellers
Mr. Edgar Shackelford
Glenn & Jan Shefter
Betty & Jerry Shevick
Paul & Simone Shoemaker
Bill & Norma Siebenheller
Mary Page Sims
Marjean Smith
Nancy Snowden
John Snyder
Dr. & Mr. Linda and Ronald Sokalski
Richard & Janice Spicka
Charles Stohr & Donna Johnston
Anne & Bob Stormont
Bob & Babs Strickland
Katharine Taylor
Robert & Susan Taylor
Elizabeth & Frank Tindall
Anne Ulinski
Charles Van Hagen
Dr. Jim & Barbara Volk
Bill & Sandra Waggoner
Steve & Eileen Wald
Harriet & Ken Walls
Susan & Terrell Weitman
Phyllis Welsh
Laura & John Williams
Patrick Williams
Raymond & Phyllis Wolfe
Chris Youngblood

\$250-500 Level

Conservation Advisors of NC
Karen & Teelko Boekschoten
Peter & Georgia Bonesteel

Chuck Breckheimer & Sandy Schorr
Kimberly & Tom Brewster
Hayden Brickle & Kay Patrick
Matt Carnes
Jay & Linda Casselberry
Corinne & Wayne Cunningham
Jack Drost
Thomas & Jane Dupont
David & Charlene Efird
Mr. Dean Egly
Douglas & Penny Freeman
Mrs. Harriett & Lucia Gates
Linda Giannasso
Joe & Claudia Gondolf
Dick Gregory & Courtenay McDowell
Mr. Chuck Hailey
John & Judy Hansen
Liz Honnold
Jack & Dorothy Hudson
* Bub Hyder
Karen Jackson
Kathleen Johnson
Melanie & Eric Johnson
Frances Jones
Woody & JoJo Keen
Susan Keever
Jim & Pam Kessarar
Ben Keys
* Gene & Linda Kopf
David L'Eglise & Kate Millar
Christopher & Mary Jane McDonnell
Pennie & Jerry Melton
Terry & Marsha Millar
James Morrison
Gus & Margaret Napier
Susan & Scott Nelson
John & Jean Reese
* Dr. Diana Richards
Kieran Roe & Miriam Stuart
Barbara Sacharow
Mary & Neal Satterfield
Rose Senehi
Gina & James Snyder
Hilliard Staton & Sue Edell
Donna & Philip Stover
Charles & Linda Thompson
Virgil & Margaret Wagner
Laura Webb
Fred & Lauren Weed
Judi & Guy Wellman

\$500-1000 Level

Robert & Martha Adams
Bonnie Arbuckle
Lee Armstrong & Mike Lumpkin
Kareem ar-Rushdi
William Fortescue
James Gilliam
Kristin Harkey & Jeff Johansson

* John Humphrey
David Keller & Nora Murdock
Mickey Kilpatrick & Bruce Beaudin
Drs. Marilyn Kolton & Lou Dwarshuis
Betty McIlwain
John McLeod
Bonnie Millar & Jake McLean
Lee & Tom Mulligan
Joe & Karen Narsavage
Jim & Barbara Neal
Richard & Victoria Polchow
Dr. & Mrs. Speed and Beth Rogers
Mark & Beth Searles
Scott & Jennifer Shevick
Bruce Smith
Mark & Ameran Tooley
Rick & Deborah Waggoner
Dr. Bob & Amy Wald
Gail & Kent Wilcox

\$1,000-3,500 Level

Sara & Bill Bentley
Mr. & Mrs. Gary and Beverly Dillon
Michael & Sydney Green
* Billy & Claire Joyner
Meredith Keever
Lynn & Tom Padgett
Ms. Rollin Raymond
Carl & Jean Schoendorfer
Brad Stanback & Shelli Lodge-Stanback

\$3,500 + \$5,000

Bill & Jerry McAninch
Karen Van Sickler & Chris Braund
Lynn Carnes Pitts & Russ Pitts
Patrick & Roseann Dennehy
Mark George
Carroll & Kae Parker

\$5,000 - \$10,000 Level

Constance & Thomas Grower
Billy & Gail Hagler
Kathleen McGrady
Steve & Brenda Pierson
Bill & Nancy Stanback

\$10,000 + Level

BA Hyder Trucking Company
C. Harrell
Patrick Horan
Fred & Alice Stanback
Loren Wells

LOOKING TO DONATE OR INCREASE YOUR GIFT?

VISIT carolinamountain.org

Business Members & Donors

\$10-100 Level

Bubba's General Store
Cloos Landscape Architecture
Eagle's Nest Foundation, Inc.
ECO
ECO Steward Realty, Inc.
Melear Properties, Inc.
North American Land Trust
Unique Mountain Properties
Unitarian Universalist Fellowship

\$100-250 Level

Backcountry Outdoors
Brevard Appraisal Company
Crystal Visions
Society of the Transfiguration
Village Antiques

\$250-500 Level

Adventure Treks
Asheville Board of Realtors
Highland Lake Inn
Hoyle Office Solutions
Keller Williams Professionals
Ken Gaylord Architects
RBC Centura
Summit Title
The Laurel of Asheville
Wolf Creek Engineering

\$500-1000 Level

Camp High Rocks
Equinox Environmental
Horseshoe Farms
Lake Toxaway Company
Sheelah Clarkson Agency
Slick Rock Country Emporium
Strauss & Associates
Taylor Land & Cattle Company

\$1000- 6000 Level

Blackwater Grille
BRB Appraisers
Camp Rockbrook
Carolina First Bank
Conservation Advisors of NC
Conservation Trust for NC
Diamond Brand
DoctorsManagement, LLC
Frontline Conservation
Luther E. Smith Associates PA
Mast General Store
Mountain 1st Bank and Trust
North Carolina Appraisal
Company
Parsec Financial Management,
Inc.
Restoration Systems, LLC
Roberts & Stevens, P.A.

\$6000 + Level

Dixon Hughes
Dixon Hughes Wealth Advisors
Laurel Mountain Preserve

2008 Members & Donors

AmeriCorps Project Conserve Host Sites

Appalachian Voices
Environmental Conservation
Organization (ECO)
Evergreen Community Charter
School
French Broad River Watershed
Training Center
Henderson County Cooperative
Extension Service
High Country Conservancy
Land of Sky Regional Council
Land Trust for Little Tennessee
National Committee for the New
River
The Nature Conservancy
RiverLink
Southern Appalachian Highlands
Conservancy

2008 Conservation Landowners

Conservation Land Partners LLC
(Art Fisher, Billy Howell and Don
Moore)
Patrick & Roseann Dennehy
Robert and Phyllis Hardin &
William and Piper Allison
Randell & Marissa Harrell
Glen & Rhonda Hollifield
Howard McElrath & Rhonda
Streadwick
Carol Sams
George Wittmer

Completed projects as of spring 2009

Joan Engle
Jonathan & Sylvia Ward

Gifts made to CMLC in honor of special friends, family and conservation supporters:

Tom & Kimberly Brewster
By Tom and Betty Brewster

Bob & Barbara Bronson
By Rachael Kefalos

Lynn Carnes Pitt
By Matt Carnes

James Cornwell
By Camille & Donald Ziegler

Maggie Crow
By Janet Benway

Barbara Eblen
By Laurie Nussdorfer

Alice & Fred Egly
By Mr. Dean Egly

Russell Hensley
By Gwen Kuhns

John & Mary Rich
By John Rich, III

Cass Shapard
By Rick & Deborah Waggoner

Jill Shapard
By Rick & Deborah Waggoner

David & Elizabeth Tooley
By Mark & Ameran Tooley

Kathy & Larry Treanor
By Maggie Crow

Bob Wald
By Deborah & Rick Bernstein
(twice)
Don & Jeanne Walker

Gifts made in memory of special friends, family and conservation supporters:

Robert Fanslow
By Lynn Cox

Florence (Polly) Kremer
By Frank & Joe Blazey

Kay McGrady
By Frances Ackley
By Katie & Steve Breckheimer
By Robert & Susan Danos
By Robert & Mary Garrison
By William Hollan, Jr.
By Liz Honnold
By Mr. & Mrs. Ashok Kudva
By Renee & Stan Kumor
By Marian Lowry
By Charles & Carole Martin
By Hans & Margo Nagel
By Hoyt Ponder
By Phil & Julia Sellers

Tony Sims
By Carla Emch

2008 Grant Funders

Buncombe County
Community Foundation of
Henderson County
Conservation Trust for North
Carolina
Earth Share of North Carolina
Foundation for the Carolinas
Henderson County
Land of Sky Regional Council
Mountain Valleys Resource
Conservation and Development
Council
Norcross Wildlife Foundation
N.C. Agricultural Development
and Farmland Preservation Trust
Fund
N.C. Clean Water Management
Trust Fund
N.C. Commission on Volunteerism
and Community Service
N.C. Department of Environment
and Natural Resources
Southern Appalachian Highlands
Conservancy on behalf of Blue
Ridge Forever
The Conservation Fund
Transylvania County
U.S. Fish and Wildlife Service

LOOKING TO DONATE
OR INCREASE
YOUR GIFT?

VISIT carolinamountain.org

In-kind Gifts from Businesses

ABC Rental Center
Big Lots
Briggs Garden Center
Busy Bee Farm
The Chimney Sweeps
Connestee Falls Golf Club
Copy Works
Culligan
Diamond Brand Outdoors
Equinox Environmental
HealthWorks Wellness Centre
Hendersonville Times-News
Highland Brewery
Home Depot of Hendersonville
(store #3637)
Ingalls Publishing Group, Inc
Kenmure Country Club
La Strada
Lowe's
Mud Dabbers
Jane Asher Antiques
Murdoch Golf Cars and Specialty
Vehicles
OP Taylors
Rumbling Bald Resort on Lake
Lure
Skyland Distributing
Slick Rock Country Emporium
Thermo Fisher Scientific
Van Wingerden International
WalMart
West First Wood Fired Pizza
Wickwire Gallery

Inkind Gifts from Individuals

Steven Ayres
Kimberly & Tom Brewster
Tracy & Scott Buchanan
Clint & Chassity Calhoun
Jay & Linda Casselberry
Sophie Christiano
David & Charlene Efird
John Humphrey
Meredith Keever
David Keller
Jim & Pam Kessarar
Jess & Phyllis Key
William Leatherwood
Bill & Jerry McAninch
James Morrison
Lynn Carnes & Russ Pitts
Dr. Diana Richards
John Tate
Bob & Amy Wald

Bring a New Member to CMLC and Receive a \$20 Gift Card from Diamond Brand Outdoors!

As a valued member, we are proud to offer a special gift to any new member you bring to CMLC.

Our longstanding premiere business sponsor, Diamond Brand Outdoors, will award a \$20 gift card to you and the friend, relative or colleague that becomes a new supporter of our cause at the \$50 level.

Our membership has been steadily growing in the last two years and we are grateful for the continued generosity, yet we strive to be a true reflection of the pride and love residents have for these beautiful mountains.

HELP US TO GROW OUR MEMBERSHIP AND ENJOY THE REWARDS!

Simply ask the new member to make a note of your name on either the remittance envelope or by contacting Aimee Baxendell (outreach@carolinamountain.org or 828-697-5777).



CMLC's Board of Trustees

Bob Wald, President
Rick Merrill, Vice President & Acting Treasurer
David Efird, Secretary
Jim Neal, Past President
Ruth Birge
Reg Heinitsh
Suzanne Holbert
John Humphrey
Billy Joyner
Meredith Keever
James Kessarar
Bill McAninch
Lee Mulligan
Brent O'Conner
Mary Jo Padgett
Lynn Carnes Pitts
Al Platt
Diana Richards
Jerry Stone
Mark Tooley

CMLC's Staff

Kieran Roe, Executive Director
Aimee Baxendell, Development & Membership
Coordinator
Sara Bentely, Finance Director
Kimberly Brewster, Operations Director
Tom Fanslow, Land Protection Director
Mary Ann Hailey, Administrative Assistant
Kristin Harkey, Development Director
Bonnie Millar, Stewardship Director
Amy Stout, AmeriCorps Program Director

Special Contracts with CMLC

John Bonham, Farmland Preservation Coordinator
Ben Nelson, Land Protection Associate
Nick Kask, Brand Management

AmeriCorps Members

Sam Carlin, Volunteer Coordinator
Christine Chen, Land Protection Associate
Jen Fawley, Outreach Associate
Jessica Long, Stewardship Program Associate



CONTACT US

Mailing address:
PO Box 2822
Hendersonville, NC 28793

Physical address:
317 N. Washington St., Suite 1
Hendersonville, NC 28739

Phone: (828) 697-5777
Fax: (828) 697-2602
Email: info@carolinamountain.org



PO BOX 2822
HENDERSONVILLE NC 28793
www.carolinamountain.org

US POSTAGE
NON PROFIT
PAID
HENDERSONVILLE, NC
PERMIT NO. 713

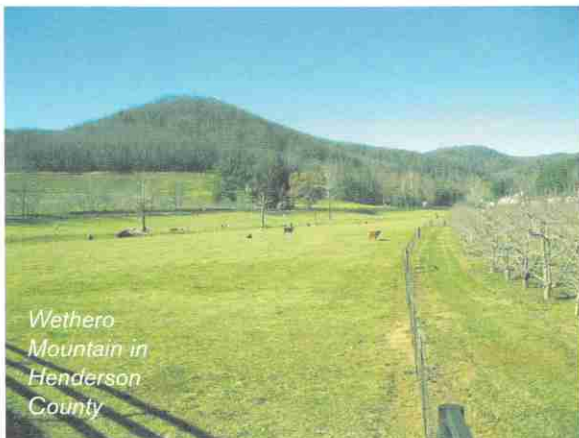
CMLC Celebrates 15 Years in 2009
Join Us in Saving the Places You Love

CONSERVATION
CELEBRATION

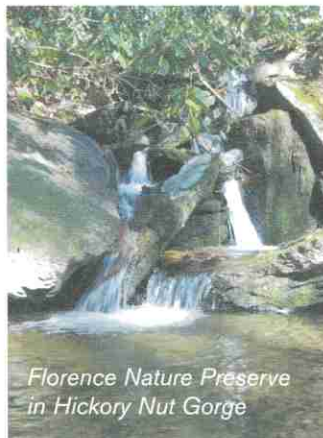
CMLC's 9th Annual Conservation Celebration Forthcoming in September!



Dethero land on the NC & SC stateline



Wethero Mountain in Henderson County



Florence Nature Preserve in Hickory Nut Gorge

