

LANDSCAPE



FALL 2003

VOL. 8 No. 2

Easement Preserves 140 Acres on Saluda Ridge

The Blue Ridge Escarpment is the 1,500-foot wall at the meeting place of two tectonic plates where the Blue Ridge Mountain range ends and the land tumbles steeply into the foothills below. The Saluda Mountains form a rugged section of the escarpment at the southern edge of Henderson County along the South Carolina line. With his donation of a conservation easement over 140 acres on the crest of the Saluda Ridge near Tuxedo, David Dethero has helped to see that an important part of this scenic escarpment area is protected forever.

"Through this generous donation, David has preserved a property of outstanding scenic and natural significance," according to CMLC Executive Director Kieran Roe. At an elevation of up to 2,900 feet near Mackerel and Hogback mountains, the Dethero property straddles a

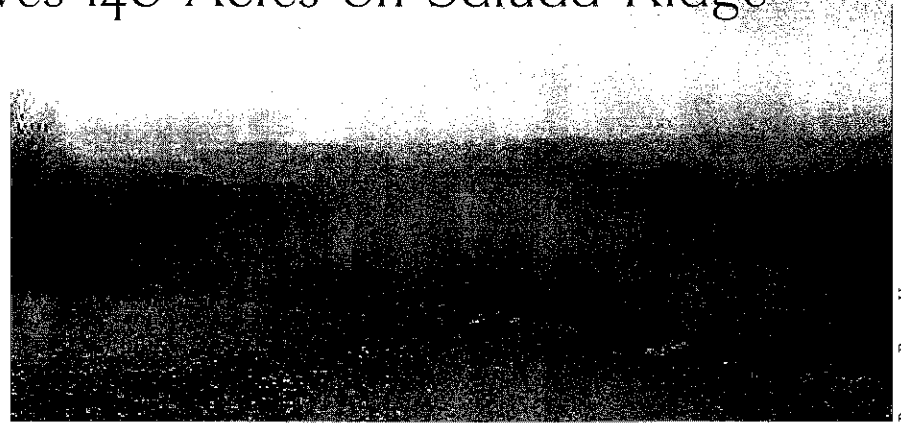


PHOTO BY REGGIE HALL

ridge that is widely visible from either side of the state line that bisects the land. Views from the property are particularly outstanding to the south, where the distant lights of Greenville are perceptible far out on the piedmont below.

View into South Carolina from the 140-acre Dethero property.

Mr. Dethero is a 30-year member of the Flat

Continued on page 2

CMLC's Fabulous Fall Fundraiser on November 8th!

The Carolina Mountain Land Conservancy is gearing up for its Third Annual Fall Benefit Celebration, *Fall Ball at the Grand Ole Hall*. Circle the date on your calendar and dust off your dancing shoes because this is an event you don't want to miss!

This year's celebration will be held Saturday, November 8th at Flat Rock's beautiful Highland Lake Inn. Following the social hour, a mouth-watering dinner buffet will be prepared by the Inn's nationally and regionally recognized chefs. We will also enjoy dancing to the jazz and swing tunes of Hendersonville's own Jennifer Scott Quartet. Dress will be festive, but not formal.

Funds raised by this event will be used to further the Conservancy's mission to conserve the beauty and richness of our natural and rural landscapes. Our appreciation goes out to the

Fall Ball at the Grand Ole Hall

following local businesses for their event sponsorship: B&A Hyder Trucking, BRB Appraisal Associates, Carland & Andersen Incorporated, Crystal Visions, Gustav Westfeldt McIlhenny Foundation, Hendersonville Times-News, Highland Lake Development, Highland Lake Inn, Ken Gaylord Architects, Luther E. Smith & Associates, P.A., Summit Title, Sylvan Habitat and the Transylvania Times.

CMLC is also indebted to its dedicated event planning committee including Event Chair Hilliard Staton, Beverly Burns, Katie Breckheimer, Betty Shevick, and Sara Bentley. And we are blessed once again by the volunteered professional services of Anne Smith at Impress Publications for this year's event designs. If you would like to join in the festivities with the planning committee, know more about the event, or find out about joining the list of event underwriters, feel free to give us a buzz us at 679-5777. 🍂

The Carolina Mountain Land Conservancy (CMLC) works with families and other landowners to preserve the land that is important to them and to our communities. Since 1994, CMLC has helped to protect over 9,000 acres in Henderson, Transylvania, and neighboring parts of Buncombe, Rutherford and Jackson counties.

Easement

Continued from page 1



PHOTO BY REGGIE HALL

Conservation easement donor
David Dethero.

Rock community who has maintained a mountain cottage as well as a small-scale horticultural operation on the Saluda Mountain land. Asked why he made the decision to protect the property, Dethero cites the "spirit of the place." As "one of nature's beautiful spots,"

Dethero has found the property to be a source of healing and rejuvenation. For many years, he cultivated native species of azaleas and other ornamental shrubs at his nursery there.

Dethero also enjoys the wildlife on his property, particularly the deer that like to congregate in a four-acre meadow area, as well as occasional bear, raccoons and wild turkeys. In his easement, he reserves the future right to construct one more residence on two acres of the property.

The remainder of the land will be conserved in its present forested and natural state.

Beyond its scenic character, the property preserves important natural features. The property is the source of several headwater streams. On the Henderson County side rises a branch of Phillips Creek, a trout stream that is a tributary of the Green River. From the south slope flows a tributary of Gap Creek, a natural

trout stream that runs to the Middle Saluda River in Greenville County. Moreover, a botanical study of the property by CMLC Land Program Coordinator Reggie Hall and Green River Project Coordinator Dana York documents high quality native plant communities, including Acidic Cove and Oak-Hickory Forests.

The Dethero property is also important due to its proximity to an extensive corridor of other wildlife habitat and protected land in the region. The nearby Jones Gap and Caesar's Head State Parks form the core of South Carolina's 10,000-acre Mountain Bridge Wilderness Area. Less than 5 miles to the southeast, Greenville's Poinsett Watershed preserves another 20,000 acres of wildlife habitat. Conservation biologists have shown that large connected areas of habitat help maintain the health of native ecosystems by allowing interchange among natural communities and sustaining their biological processes.

Much of the Dethero land lies in the Upper Green River watershed, a priority area for CMLC. In a county experiencing unprecedented growth and development, the Green River region retains a great deal of rural and natural character (see related story below). In recent years, several other landowners in the Upper Green River region have protected their land with conservation easements. By working with landowners to preserve additional important sites across the watershed, CMLC hopes to continue creating a network of conserved green space there. The Dethero conservation easement, by preserving one significant part of this network, will provide lasting scenic and ecological benefits to the region. ●



The upper Green River watershed is located in the southernmost section of Henderson County. Pressure for residential development threatens this watershed because of the developable terrain, natural beauty, and large unfragmented portions of land. In 2001 CMLC produced an Upper Green River Riparian Conservation Study identifying important land along this high quality trout river. With the support of a new grant from the Conservation Trust for North Carolina, CMLC will continue this important work and initiate contact with priority landowners in the area. The Conservancy will contact landowners and community groups and work with them to help protect this important ecological treasure. This portion of the exciting project is just beginning — we will keep you updated! ●

Bunched Arrowhead Site Protected

The owner of a .3-acre site in the Flat Rock area has donated a conservation easement that will protect a federally listed plant species — the Bunched Arrowhead (*Sagittaria fasciculata*). Due to the widespread destruction of its habitat in recent decades, this unpretentious little wildflower is one of the rarest native plants in North Carolina. Our region once contained many bogs, fens and seeps that provide the habitat for several endangered species. Of an estimated 5000 original acres of mountain bog habitat throughout the Southern Appalachians, only some 500 remain today. Several bog species, such as orchids and pipeworts, have already been extirpated.

The Bunched Arrowhead, along with other

endangered bog species such as the Mountain Sweet Pitcher Plant (*Sarracenia rubra ssp. jonesii*), is hanging on, but facing tough odds. There are about a dozen known Bunched Arrowhead sites on the planet — all located within Henderson County, NC or Greenville County, SC. These populations remain threatened by residential and industrial development and by conversion to agriculture.

CMLC will work with the landowner, as well as the US Fish and Wildlife Service and the NC Plant Conservation Program, to monitor this site and see that the habitat is maintained in a manner that best preserves the Bunched Arrowhead population into the future.

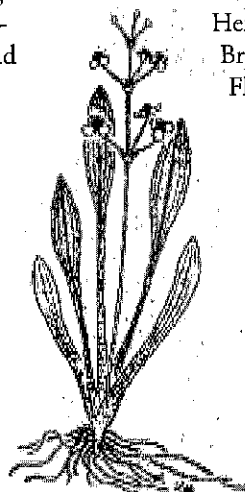
Bunched Arrowhead Factsheet

Family: Alismataceae

Latin Name: *Sagittaria fasciculata*

Status: Endangered, Federal Register, July 25, 1979

Description: Bunched Arrowhead is an emergent aquatic perennial herb that grows 6 to 13 inches in height. Its spatulate-shaped leaves reach 12 inches long and three-fourths of an inch wide, and stem from the base of the plant. The flowering stalk is erect, with upper flowers male and lower flowers female. Male flowers have three reflexed sepals, three white petals, and numerous stamens with pubescent, dilated filaments. Female flowers have three spreading or reflexed sepals, three white petals, and numerous separate carpels. The stalks of the lowest whorl of flowers ascend in fruit, and the fruiting head is of numerous achenes. Flowering and fruiting occurs from May to July.



Range and Population Level: Bunched

Arrowhead is presently known from two populations in Henderson County, North Carolina, and four populations in Greenville County, South Carolina. The herb's historical distribution included at least seven additional North Carolina localities in Henderson County, all in the French Broad River Valley from south of East Flat Rock north to Asheville.

Habitat: Bunched Arrowhead grows in seepage areas which have little or no net flow but are not stagnant. The soil in the seepages can be characterized as sandy loams overtopped by a muck layer ranging in depth from 25 to 60 centimeters. Shaded sites have larger, more vigorous plants than open areas.

Reasons for Current Status: The current status is the result of past and potential habitat losses combined with the plant's naturally limited range and the small size and number of its populations.

For more information please contact:

U.S. Fish and Wildlife Service
330 Ridgefield Court
Asheville, North Carolina 28806
Telephone: 828-665-1195

Conservancy Wish List

Thank you to recent donors of computer equipment and a digital projector. Your in-kind gift of any of the following will greatly aid our work:

- Laser printer
- Cell phone service
- Easel
- Projector Screen
- Paper cutter
- Used auto in running condition
- Permanent tri-fold display board

CMLC Board of Trustees

John Humphrey, President
Bob Youngerman, Vice-President
Jim Neal, Treasurer
Beverly Burns, Secretary
Reg Heintsh
David Keller
James Kessar, D.D.S.
William Leatherwood
Jim McKinley
Lee Mulligan
Brent O'Conner
Al Platt
Hilliard Staton
Jerry Stone

CMLC Advisory Board

Katie Breckheimer
Bob Carter
Chuck McGrady
Larry Ragsdale
Anne Ulinski

Staff

Kieran Roe, Executive Director
Reggie Hall, Land Program
Coordinator
Holly Demuth, Development &
Outreach Coordinator

Landscape is published by:
Carolina Mountain Land Conservancy
210 Ehringhaus Street, Bldg. D
PO Box 2822
Hendersonville, NC 28793
828-697-5777
email: info@carolinamountain.org
web: www.carolinamountain.org

Graphic design by Anne H. Smith of
Impress Publications

Board Member Profile

David Keller

Five years ago David's wife, Nora, gave him a homebrew kit for his birthday. Five months later David opened the kit and took a turn at home brewing. To David's surprise "it wasn't half bad." Today, David Keller is a founding member of Mountain Ale and Lager Tasters (MALT), the local brew club, and was honored as the 2002 North Carolina Brewer of the year. Besides David's expertise in brewing he spends his day as a healthcare business consultant at DoctorsManagement, LLC. in Asheville.



David is a native of the Hickory Nut Gorge and came to CMLC out of concern that the region's wild places were becoming too few and far between. He has watched the area develop and sees a need to conserve what we still have. David's love for wild places extends to his family. His wife has been a biologist with the US Fish and Wildlife Service and the National Park Service for over 20 years, and his eldest son, Aaron, is pursuing his MA in Wildlife Biology at the University of Tennessee. David's background and passion for conserving land has been a welcome addition to the Board. His enthusiasm has helped the Board to continue setting ambitious goals. 🍷

Demuth Brings Development Experience to CMLC

CMLC is pleased to announce the hiring of Holly Demuth as our new Development and Outreach Coordinator. Holly comes to us most recently from the Community Foundation of Henderson County, where she served as Program & Development Assistant since 2001. Prior to that, Holly served as a US Park Service Seasonal Interpretative Ranger at the Golden Gate National Recreation Area in San Francisco, California, and then at the Carl Sandburg National Historic Site in Flat Rock. She is a graduate of Agnes Scott College in Decatur, Georgia (B.A. in Chemistry), and Georgia State University in Atlanta (M.Ed. in Secondary Science).



CMLC's new Development and Outreach Coordinator, Holly Demuth.

According to CMLC executive director Kieran Roe, "Holly brings to the Conservancy valuable experience in local nonprofit fundraising and a strong commitment to conservation. With her wide network of connections in the community, she is well-positioned to help increase awareness and support for CMLC." Among her many volunteer activities, Holly serves on the Board of Directors of the Unitarian Universalist Fellowship of Hendersonville, as a Mediator with the Dispute Settlement Center of Henderson County, and as a volunteer Water Quality Stream Tester with the Environmental and Conservation Organization's Biological Stream Monitoring Project. Holly is a native of Kingsport, Tennessee, and is glad to call the southern Appalachian mountains her home.

Holly replaces Maggie Winter-Sydnor, who returned to California in August. In her short stint at CMLC, Maggie made valuable contributions. We wish her all the best back in the Golden State. 🍷

CONSERVATION PARTNER SPOTLIGHT

In every edition of Landscape, the Conservancy features one or more of its business members. When doing business in our community, please support those who support CMLC.

Mast General Store Makes Land Trust Day a Success

On a visit to the Boone area in 1979, Florida native John Cooper came upon the historic Mast General Store in Valle Crucis. As a preservation-minded entrepreneur, John was fascinated with the store's architecture and history. So when he learned that Mast's owners were closing up the shop, he and his wife Faye decided to purchase it. Twenty-four years later, Mast General Store can be found in six locations in western North Carolina, carrying on a tradition started in 1883. The Hendersonville store, which opened in 1995 in a historic Main Street building, provides our community with traditional mercantile goods, comfortable clothing, rugged footwear and quality outdoor gear for all mountain seasons.

Cooper contacted CMLC this spring about participating in North Carolina Land Trust Day, an annual day of recognition for the 22 local land trusts working in communities across the state. NC Land Trust Day was initiated several years ago by the Great Outdoor Provision Company (GOPC), an outfitter with locations in the eastern part of North Carolina. GOPC donates a percentage of the day's sales to land trusts working near their store locations. In 2003, Cooper and the Mast General Store became pioneers by bringing Land Trust Day to the support of land trusts in western North Carolina.

On Land Trust Day 2003 — Saturday, June 7 — CMLC set up a booth outside the Hendersonville Mast General Store and provided information to customers about our mission and programs. CMLC staff and volunteers enjoyed the chance to speak with folks about the benefits of becoming involved as members and volunteers. Additionally, Mast donated 10% of their sales for the day to CMLC.

In addition to supporting local land trusts financially, Cooper plans to donate a conservation easement on his Valle Crucis land to the High Country Conservancy in Boone, North Carolina. Our appreciation goes out to John and the Mast General Store for their leadership in supporting CMLC and conservation in our state. 🍂

Upcoming Events

Oct. 3 to 24

CMLC Display

at the showing of *Winged Migration*
Skyland Arts Cinema
538 North Main Street, Hendersonville
Winged Migration is a stirring documentary relating the saga of a myriad of birds all along their migration routes.

Oct. 26

Fall Hike - "High (Altitude) Tea" at
Wolf's Lair, 1:30 - 3:30 PM
(see full description on last page of newsletter)

Aug. 28 - Nov. 4

Henderson County

Comprehensive Plan Public Meetings

A series of meetings in communities throughout the county. The public is encouraged to attend and tell planners how they would like their communities to grow and what they would like to preserve.

On the web, go to

<http://www.hendersoncountync.org/planning/ccp/CMSchedule.html>
to see a full schedule of meetings.

Good Growth Makes Good Sense Series

Nov. 11 • *Growth and Open Space Preservation: Successful Experiences from the South Carolina Coast* • Hendersonville City Operations Center • 305 Williams Street (near intersection of 4th East), Hendersonville • 7:00 to 8:30 PM • Dana Beach, executive director of the South Carolina Coastal Conservation League, is the featured speaker.

This series is brought to you by: Designing Our Future • The Greater Hendersonville Chamber of Commerce • Environmental and Conservation Organization • Partnership for Health • Carolina Mountain Land Conservancy • Transportation Advisory Committee • League of Women Voters.

Annual Summary 2002

Carolina Mountain Land Conservancy (CMLC) is a local nonprofit organization that helps families and landowners preserve the land that is important to them and to our communities.

CMLC provides landowners with options — conservation easements, land donations and purchases — that help preserve our region's natural beauty and diversity for future generations.

CMLC has permanently protected over 9,000 acres of land in Henderson, Transylvania and neighboring parts Buncombe, Rutherford and Jackson counties since 1994.

FINANCIAL SUMMARY

2002 Fiscal Year Figures

REVENUE

Grants	\$ 95,019
Dues & Donations	\$ 59,356
Restricted Donations	\$ 23,350
Interest & Other	\$ (117)
Total Gross Revenue	\$177,608

EXPENSES

General	\$ 36,765
Land Protection	\$ 97,661
Protection Planning	\$ 18,510
Education	\$ 4,309
Total Expense	\$157,245

Change in
Net Assets \$ 20,363

Net Assets at
Beginning
of Year \$1,635,783

Net Assets at
End of Year \$1,656,146

Completed Conservation Easements 2002

Henderson County

- Protected 23 acres of pasture and orchard along Puncheon Camp Creek near Edneyville.
- Protected 6 acres of riparian buffer and farmland at the confluence of the North and South Forks of the Mills River.

Rutherford County

- Protected 39 acres of forest in the Chimney Rock Natural Area along Wolf and Pool Creeks.
- Protected 12 additional acres of riparian buffer on Pool Creek above Bottomless Pools, Lake Lure.

Transylvania County

- Protected 63 acres of old growth forest and diverse natural communities near Gorges State Park in Quebec.
- Protected 45-acre former camp property near Cedar Mountain.

Additional Highlights 2002

- Completed Region-Wide Conservation Mapping Project.
- Hired Land Program Coordinator as second fulltime staff person.
- Held Educational Workshops for Flat Rock-area and French Broad Riverfront Landowners.
- Hosted The Artist's View series celebrating art and nature, and the successful Party for the Natural Landscape with the Arts Center of Henderson County.
- Held outings to the Florence Nature Preserve, the Fekete Conservation Property, and to view Sandhill Cranes in TN.
- Received 2002 Smart Growth Partners Award recognizing CMLC's Hickory Nut Gorge conservation efforts.

CMLC Supporters (November 2002 - September 2003)

NEW MEMBERS/CONTRIBUTORS

Ken and Lynn Adams
Richard Bir
John and Wanda Boineau
Joan Brittain Shearin
Gaines M Brown
Jim and Evie Brush
T. Heyward Carter
Kim Church and J. Anthony Ulinski (In honor of Anne Ulinski)
Edith and James Collins
Mary C Cutler
Jack Drost
James and Keith Earnhardt
Michael Egan
Tom and Nancy Eubank
Vaughan Fitzpatrick
Laurie and Bruce Goodman
Billy and Gail Hagler
Reggie Hall
Cathy D Ham
Tom and Judi Haworth
Eddy Williams Hayes
Katrina R Hayes
Margaret T Herrmann
Matt Jetzt
Erik Jetzt
Brian and Betty Johnson
Gordon and Loie Kiddoo
Mitchell and Dorothy Kostro
Mrs. Anthony Kushigian
Charles and Karen Kuykendall
Dr. John Laurens
Remy and Helen Ludwig
Keith and Bonnie Maddox
Dr. Richard B. Mailman (In memory of Christian David Cahours)
John McLeod
Ray and Marie Miller
Robert Morrison
Richard Owensby
Lynn and Tom Padgett
Heidi and James Radford
Donald Ransom
Jacquelyn Rogow
Paul and Simone Shoemaker
Rick Stevens
Mr. & Mrs. Stephen Thomas
Mrs. Mary-Brent Trigg
Charles Van Hagen
Joseph and Natasha Vanderwerf
Richard and Helga Vogel
Jessica Walters
Thomas and Linda Westfeldt
Maggie Winter-Sydnor and Rusty Sydnor
Dana York

RENEWING MEMBERS AND CONTRIBUTORS

Frances T Ackley
John and Annie Ager
William M. and Mae Alexander
Bonnie Arbuckle
Connie and Gib Backlund
David and Celeste Baldwin
C. Shannon and Mary Baldwin
Ann Bauer
Harold and Janet Beam
Frank and Nancy Bell
Mary K. Bell
Bruce Bente
Sara and Bill Bentley
Janet Benway
John Bevan

Mrs. Mildred Blaha
Dixie & Leo Blumer
Marian and Edward Bramlette
Katie Breckheimer
Charles Breckheimer
Laurabeth Breeding
Roger Briggs and Virginia Faust
Richard Broadwell
Mrs. Freida Brown
Bill and Lee Burdett
Betsy and Allen Burdett
Wes and Sharon Burlingame
Beverly & Steve Burns
Dr. E. Eddy and Penelope Burns
J.J. and Don Bushman
Tom Byers
Jon and Tamara Calabria
Cindy and Wade Carpenter
Robert V. and Lynn D Carter
Louis Caughill
Mimi Cecil
Knud Clausen
Carola and Stuart Cohn
Joan Colburn and Blair Justice
James A Collins
Don and Connie Cooper
Mr. & Mrs. Arthur D. Cree
Fred O. and Dixie Gibbs Dellinger
David Dethero
Betty Dickinson
William and Cynthia Drake
Fowler Dugger Jr.
Ken and Diane Duke
Thom and Nancy Duncan
Fred and Iris Durand
Eugene and Barbara Earnhardt
Mr. Gerald S. Echols
Robert and Lynne Eisenberg
Mr. & Mrs. Robert H. Ellis
Arthur and Polly Evans
Edmund and Carver Farrar
Elisabeth Feil
Paul and Vicki Fekere
Rubin and Ann Feldstein
Bill and Martha Fogle
James and Sheryl Fortune
Charles Eben Franz
Sam and Ann Fritschner
Mary Frye
Bill and Mary Garrison
Helen Gift
Madge and Hugh Gleaton
Wilfred Good
James and Judith Guyer
Cary H Hall
A. Paul Hansen
Theresa P. Harville
Edward Hathaway
David and Rita Heatherly
Mary and Sam Highberger
George and Barbara Hochschild
Timothy W. Hoel and Barbara J. Blumer
(In honor of Dixie and Leo Blumer)
Stewart and Betsy Holmes
Dennis and Liz Honnold
Bill Hough
William B W Howe
Jack and Dorothy Hudson
John Humphrey
Bernard and Gloria Jaffe
Lincoln and Shirley Jankowski
Andries Jansma
Ellen Jensen
Jeff and Elizabeth Jennings

Don and Nan Jennings
Sylvia and Wesley Jensen
Robert Johnson
Billy and Claire Joyner
Nancy Keller
David Keller and Nora Murdock
Maureen Keller
Ron and Donna Kent
Adelaide Kersh
Mike and Penny Keys
Fred and Frances Kiehle
William D. Killian
Mickey Kilpatrick and Bruce Beaudin
Costanza Knight and Richard Johnson
Stan & Renee Kumor
Robert and Susan Laborde
David and Lee Laidlaw
Daniel W. and Edith M. Lang
Karen Larken and Dr. Tim Weatherill
Mr. & Mrs. Charles T. Larus
Ed and Sandy Lastein
Mike and Mary Pat Lemmons
Mr. & Mrs. Richard Leppingwell
Jeff Llewellyn
Marian Lowry
Dan Lyons
Elizabeth MacCallum
Jim W. and Cosy Marshall
Maria Mason
Bill and Jerry McAninch
Courtenay McDowell and Dick Gregory
Chuck W. and Jean McGrady
Michael J. McGrady
Alma K. McKee
William and June Meanix
Thomas and Lucille Meekins
Eleanora Meloun
Pennie and Jerry Melton
Julia Menard
Rick and JoAnne Merrill
Mrs. R. G. Miller
Nancy Mitchell and Neal Andreae
Reece G. Mitchell
Gus and Margaret Napier
Jim and Barbara Neal
Jan Nolan
Howard and Jackie Norton
Martha Ohaus
Mary Jo Padgett
Erika Parmi
Conrad and June Person
Richard Polchow
Margaret Ann Polchow
Grace and Joseph Poli
Larry & Betty Ragsdale
Rollin W. Raymond
Lynn and Mike Redmond
David H. and Susan S. Reece
James Reed Jr.
Winthrop and Margaret Reed
John R and Jean Roeder Reese
Helen and Myles Reilly
Kieran Roe and Miriam Stuart
J. Speed and Beth Rogers
Kim and Raymond Russell
Sandy and Missy Schenck
Weldon Schenck
Mrs. Alexander F Schenck
Alan D. and Carolyn Schmalz
Fran Schneider
Carl and Jean Schoendorfer
Mr. & Mrs. Edgar P. Shackleford
Glenn and Jan Shefter
Bob and Lorrie Shelly

Ken Shelton and Marney McClung
Sidney A. and Jane Sherwin
Betty Shevick
Rebecca and Lee Sigmon
Patricia and Edward Simpson
George and Norma Sisson
David and Eleanor Sloane
Martha Sneed
John M Snyder
James and Suzanne Soos
William C. and Nancy Stanback
Brad Stanback and Shelli Lodge-Stanback
Mr. & Mrs. Lewis F. Steinbach
Aleen Steinberg
Stuart Stepp
Anne and Bob Stormont
Lucie A. Strayer
Art and Jean Stuenkel
Robert and Beatrice Stuhmer
Bill and Shirl Thomas
Margaret S. Thomas
Robert V and Elizabeth Thoms
Stella Tripp
Anne Ulinski
George and Connie Updike
Anne Valentine & Greg Fertik
Valerie A. Vanderheyden
Dr. Joe Vogel
James and Barbara Volk
Mrs. Jane Waddell
Bill Waggoner
Bob and Amy Wald
Harriet and Ken Walls
Bob and Anne Washburn
Susan and Terrell Weitman
Ken Weitzen and Sandy McGlashan
Pat Wellborn
David Wheeler and Judith Hallock
Ron and Roxana White
David and Betsy Willis
Rev. John Wright
Richard and Elizabeth Wyckoff
Tim Yocum and Persis Coleman
Ken Youngblood
Bob and Bonnie Youngerman

NEW AND RENEWING BUSINESS MEMBERS

Adventure Trieks
B & A Hyder Trucking
Carland & Andersen Incorporated
Conservation Advisors of North Carolina
Crisp, Hughes, Evans LLP
Crystal Visions
Eagle's Nest Foundation, Inc.
ECO
Ken Gaylord Architects
Land Trust Alliance
LandSavers, Inc.
Luther E. Smith Associates PA
Macon Bank
Mast General Store
North American Land Trust
Pacolet Area Conservancy
Prudential Foundation
Taylor Ranch
Transylvania Times
William G. Lapsley & Associates, PA

GRANT FUNDERS

Conservation Trust for NC
Mountain Valleys RC & D
NC Clean Water Mgmt Trust Fund
Z. Smith Reynolds Foundation

Fall Hike and High (Altitude) Tea at Wolf's Lair

Sunday Oct. 26, 1:30 PM

Meet at the Unitarian Universalist Church,
Intersection of Kanuga Road and Price Road,
3 miles west of Hendersonville.

Wolf's Lair is a 1,367-acre tract near the top of Pinnacle Mountain in Southwest Henderson County. Come enjoy a cup of hot tea and take in the fall beauty of this North Carolina National Heritage Area. Learn about the status of the Conservancy's efforts to protect this priority site.

Call CMLC for more info and to RSVP at 697-5777.



Return Service Requested

Hendersonville, NC 28797-2822

PO Box 2822

210 Ehringhaus Street, Bldg. D

CAROLINA MOUNTAIN LAND CONSERVANCY

NONPROFIT
U.S. POSTAGE PAID
HENDERSONVILLE NC
PERMIT NO. 713